

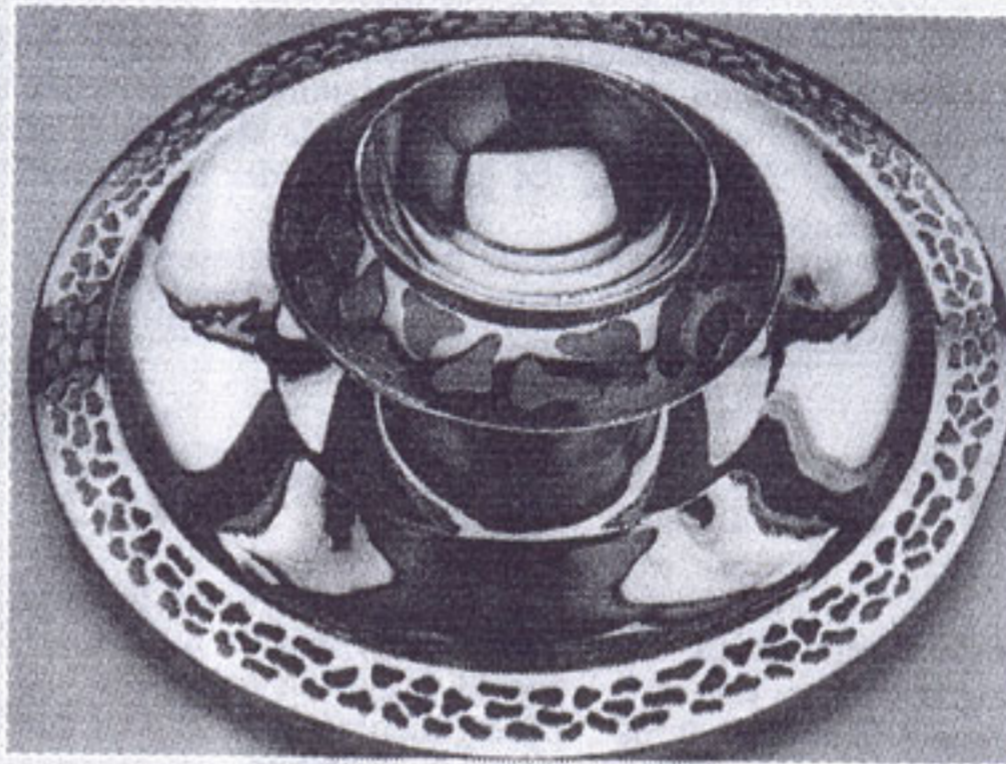
Client : Ravissant

Publication : Economic Times (Mumbai)

Page No : 8

Date : 10.09.00

Circulation : 104,978



Argent efforts

Ravissant looks to tradition for a contemporary silver lining

RAVISSANT'S silver range has always been unrepentantly contemporary. The lines are avant garde yet clean and there's a quirky touch to even the most mundane of objects. Time, though, their inspiration is Indian. Specifically, the imagery associated with Shiva and temple ornamentation on the one hand, and the sinuous lines of Mughal masterpieces like the Taj Mahal. The treatment, however, is still contemporary -- even

cosmopolitan. A contradiction in terms, you might think, given the traditional nature of the theme. But there aren't any jarring notes. Perhaps it's because the design team is drawn from Germany, France and Holland, besides Indians.

The expected range of tea and coffee sets, desk and office accessories, dinnerware, ashtrays vases etc are given a special twist with the unexpected use of the

BUYLINES RAVISSANT



traditional -- like a candlestand with the trishul as the holder or a penstand whose curves echo the dome of the Taj Mahal. The most spectacular collection, of course, is their signature "Illusion" or Maya range whose combination of curves, perforations and reflections makes for evocative imagery. Starting from Rs 3,100, the prices soar, but each one is a masterpiece. Worth it, as usual.

■ RRD
Ravissant, 50-51
Friends Colony
Community
Centre,
New Delhi

